



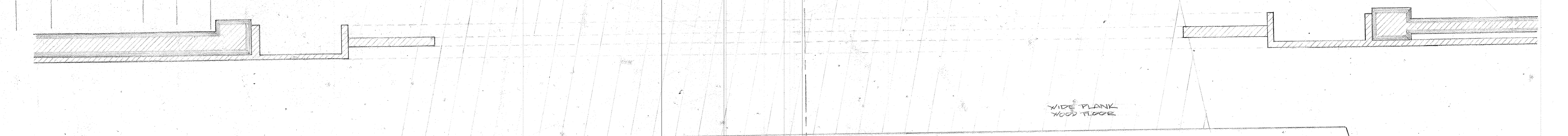
YOU CAN'T TAKE IT WITH YOU

9-16-13

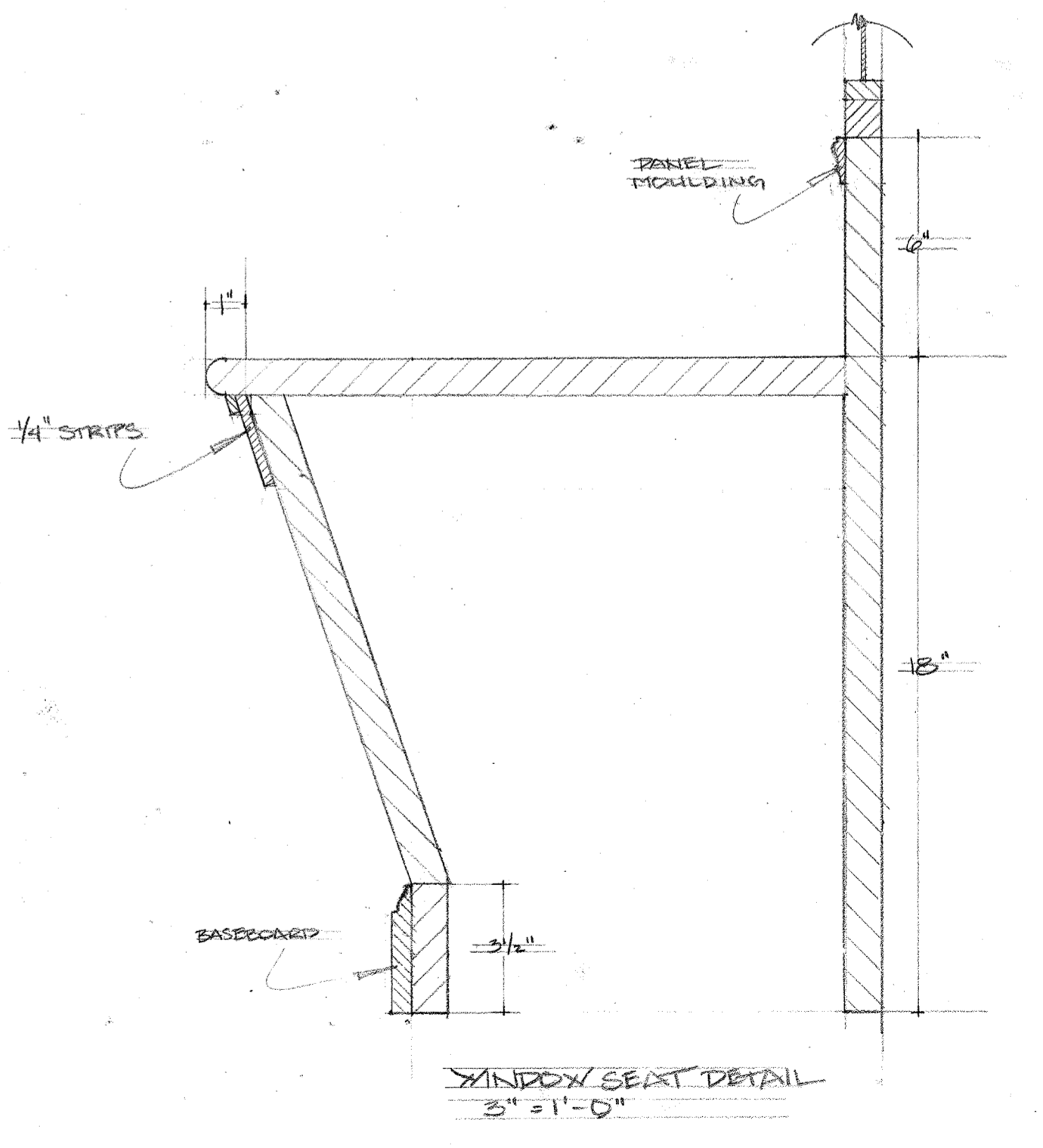
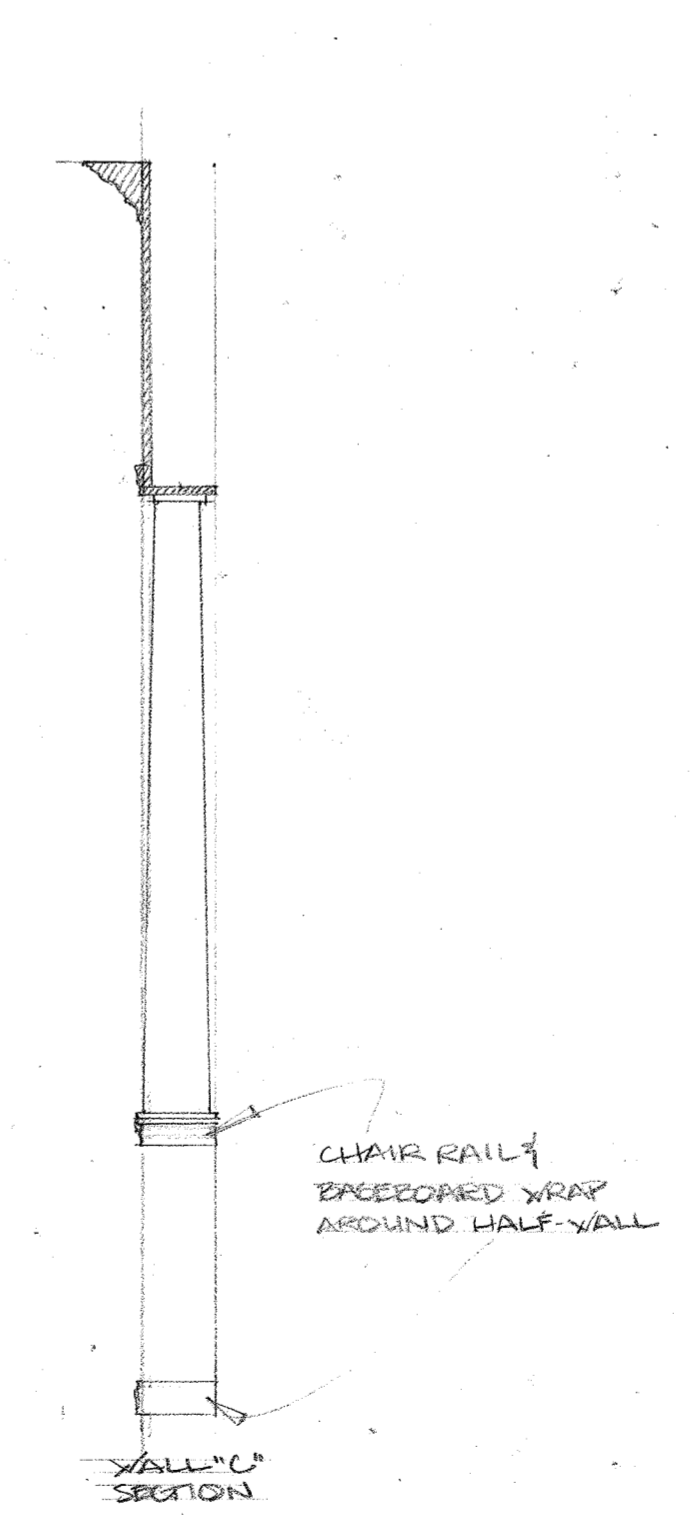
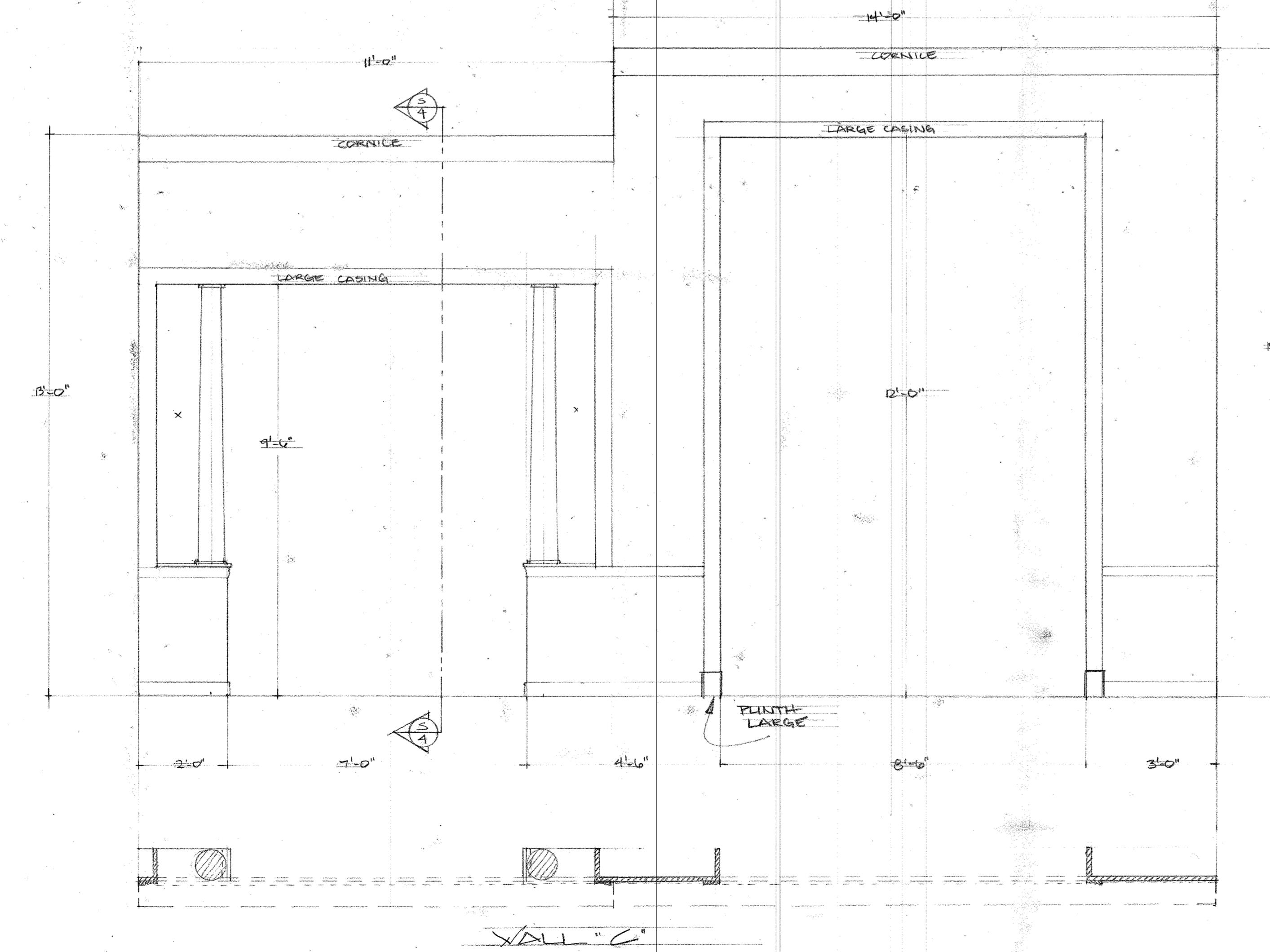
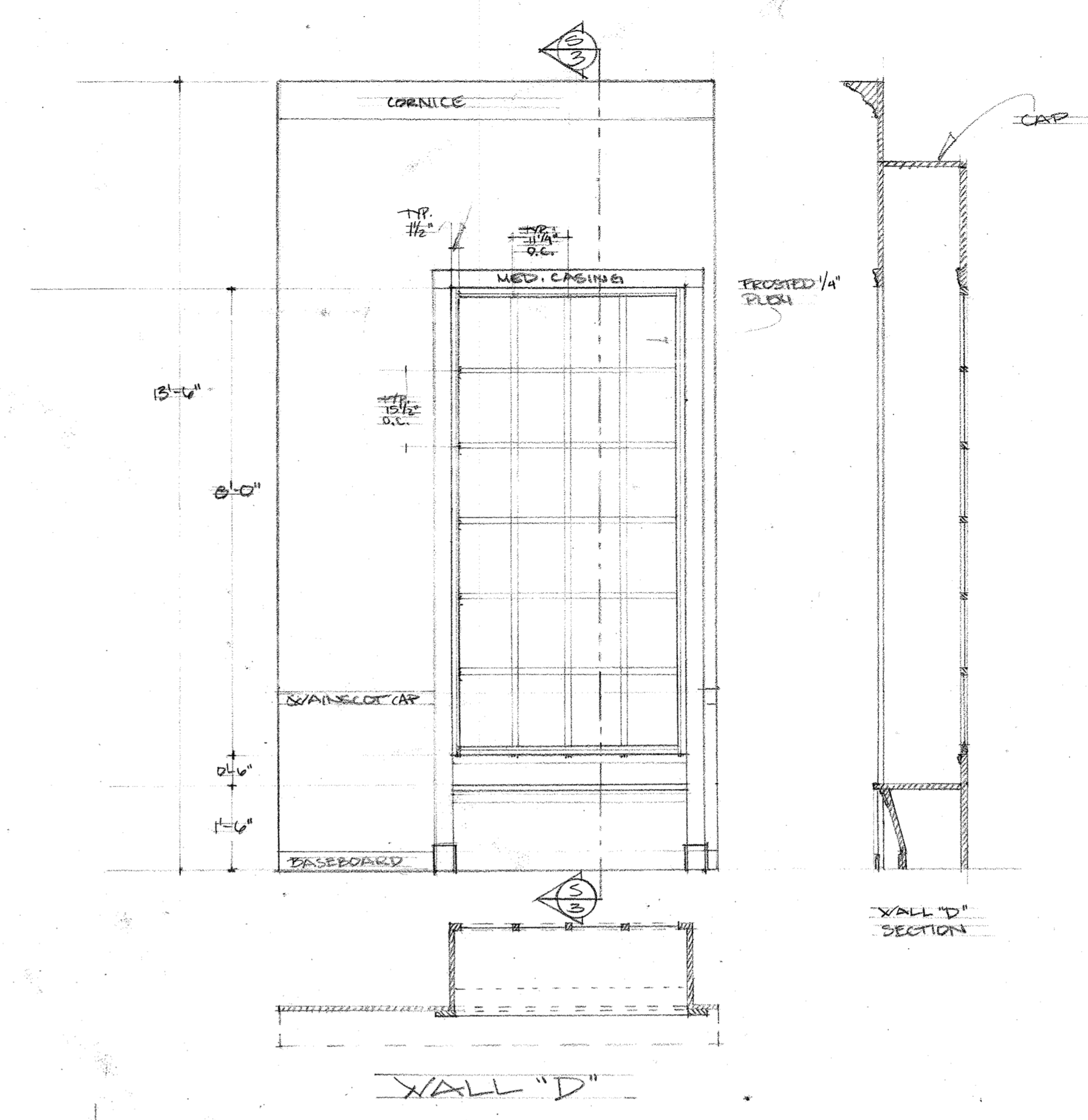
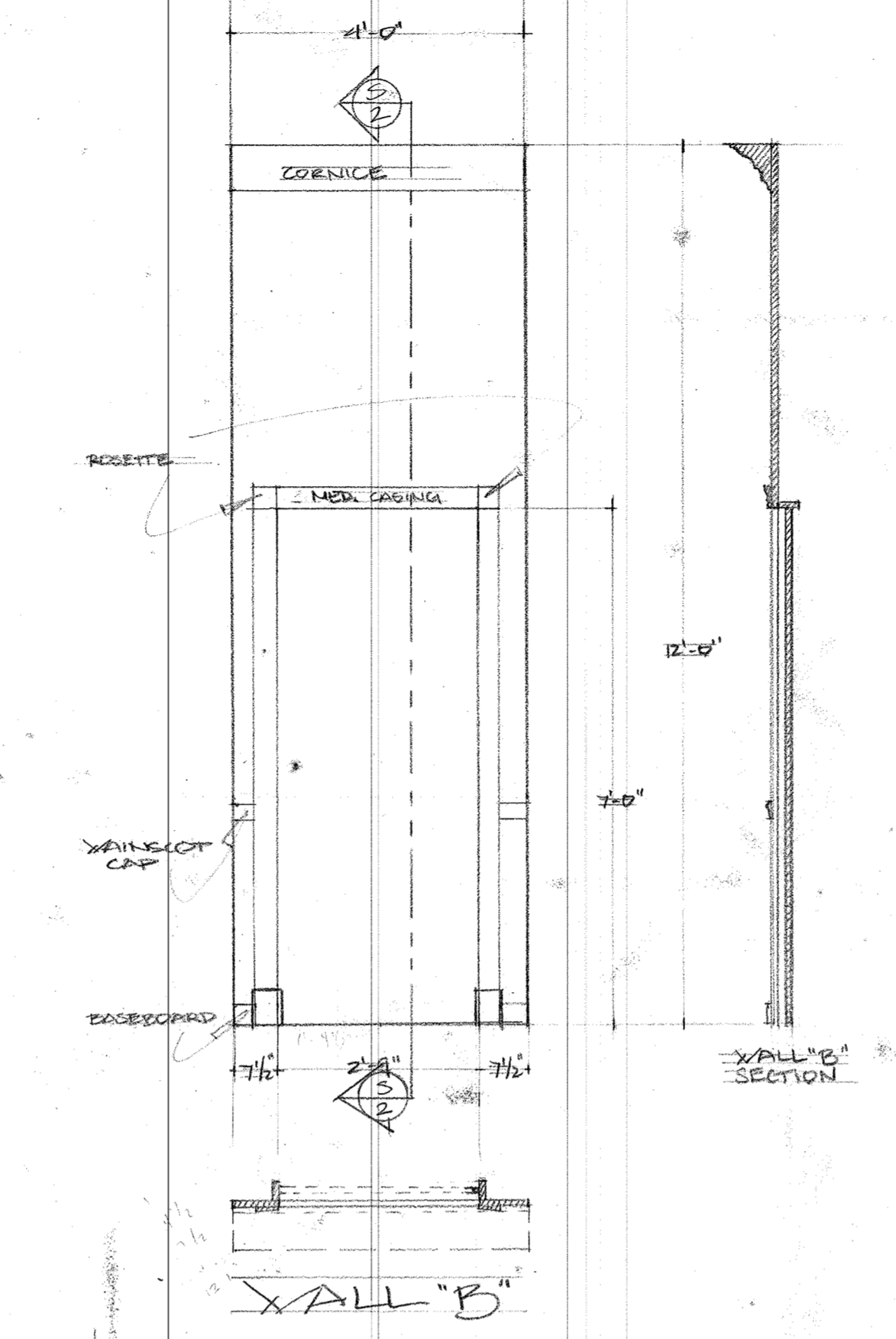
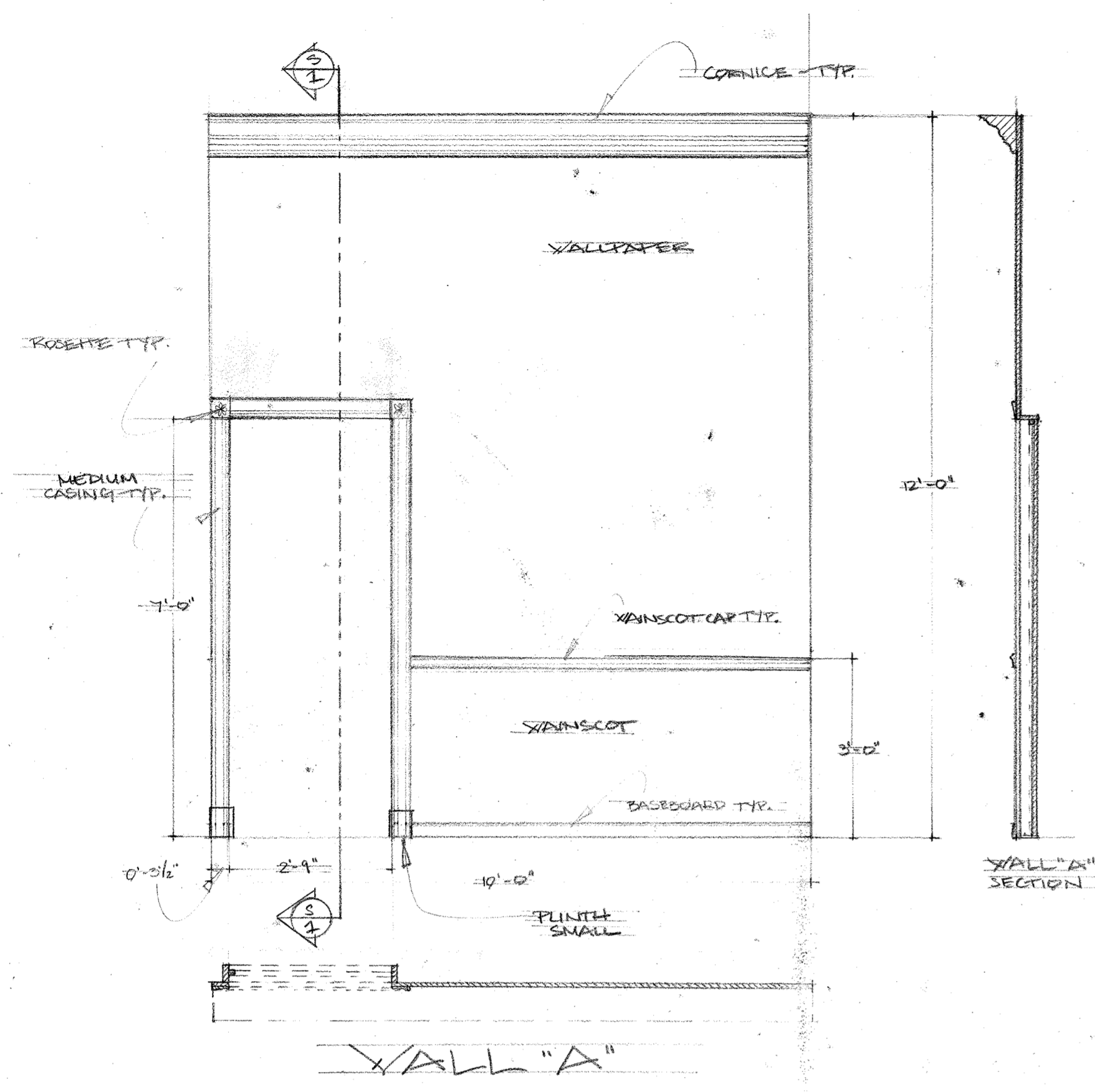
ITEM:	SHEET NO.
GROUND PLAN	1
SECTION	2
ELEVATION WALLS A-D	3
ELEVATION WALLS E-H	4
ELEVATION WALLS I-K	5
MASKING WALL ELEVATIONS	6
PORTAL	7
MOULDING & STAIR DETAILS	8

PAM LEE

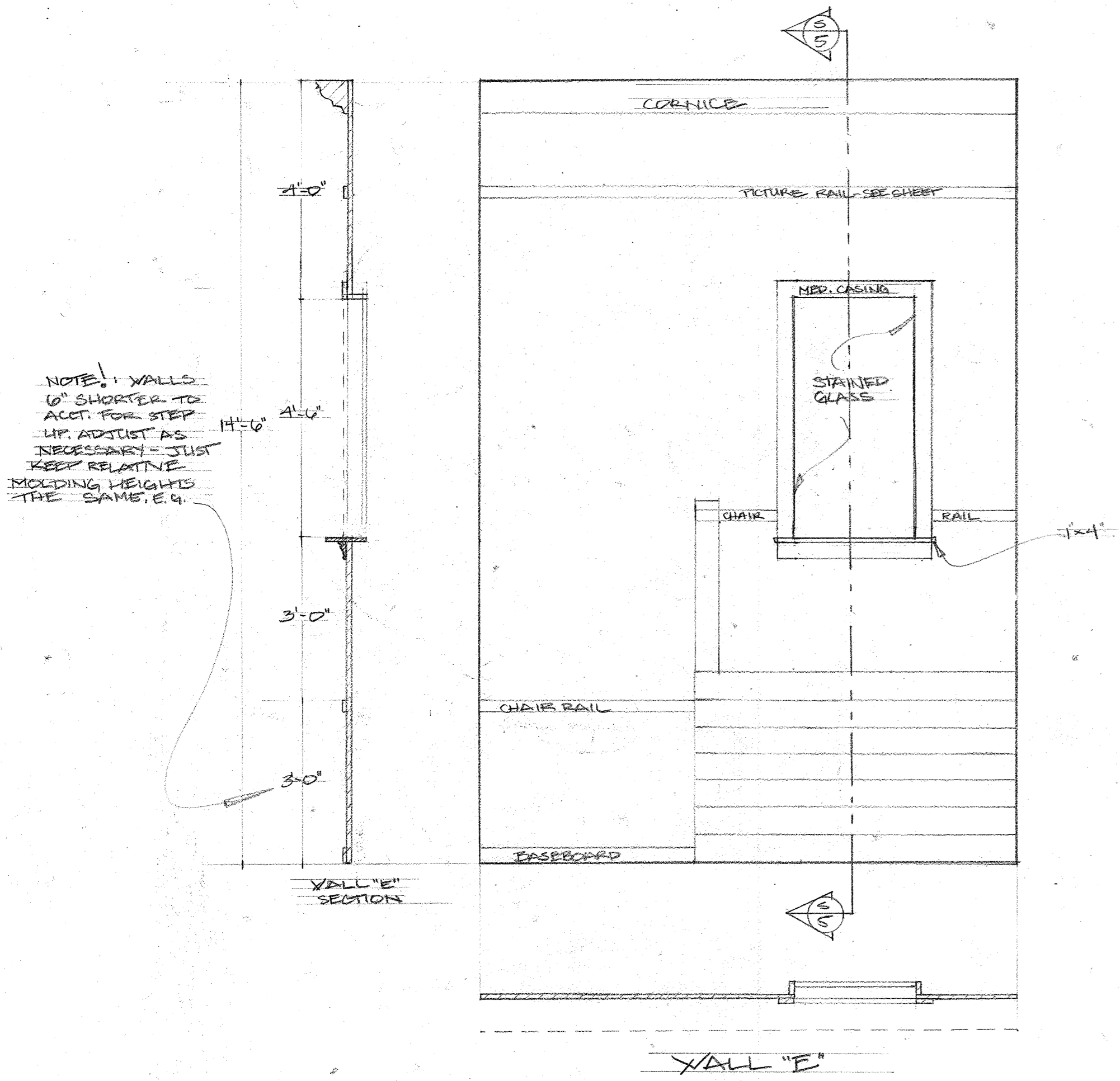
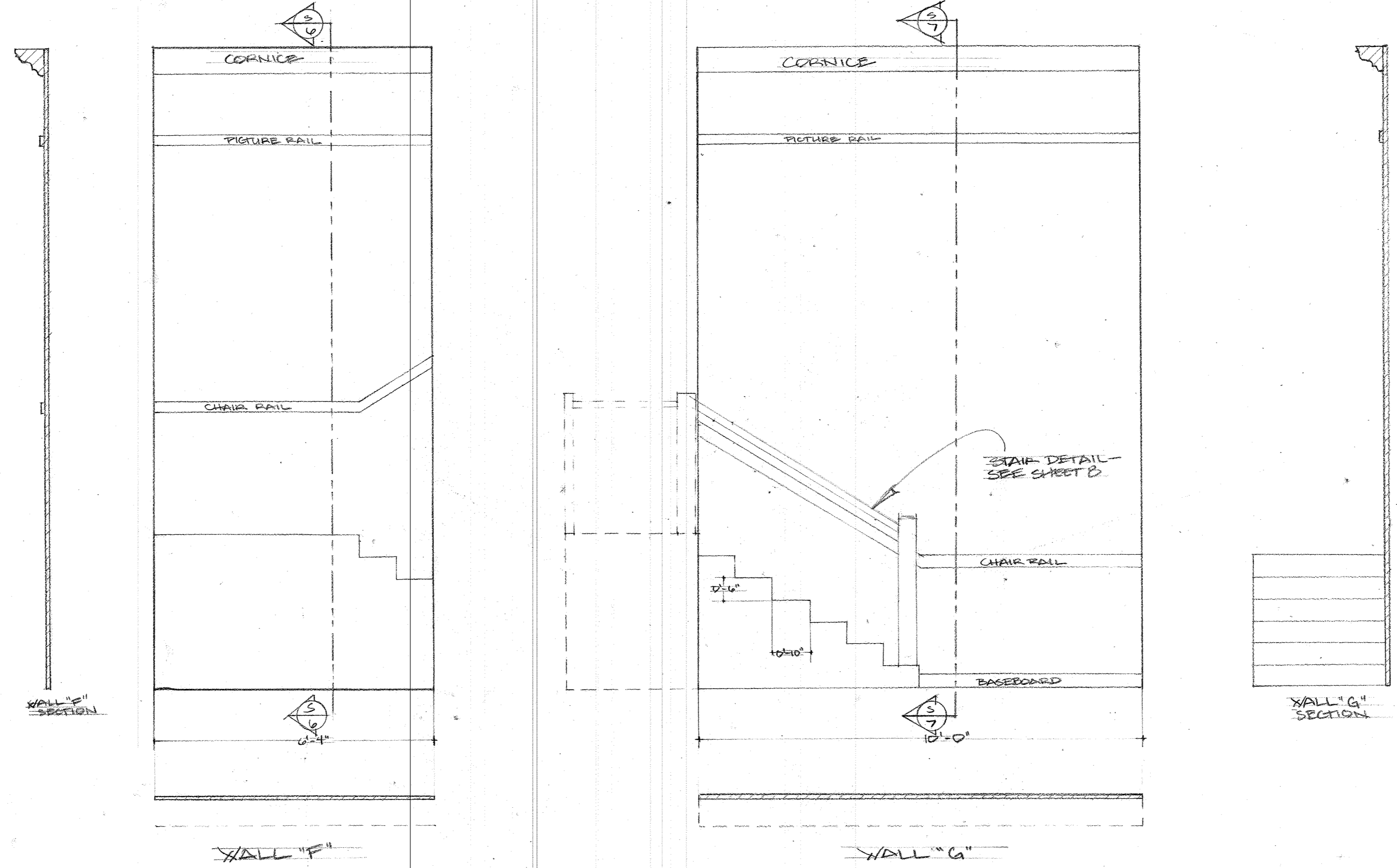
LINE SET	UNIT	TOTL. TRIM HT.
43	CIC	31'-11" 0'-0"
32	BORDER	23'-11" 12'-6"
13	LEGS & BORDER	9'-11" 14'-6"
12	BOUNCE DROP U.S.L.	9'-1" 0'-0"
4	LEGS	3'-11" 0'-0"
2	MAIN DRAPE	14'-1" 13'-6"
1	VALANCE	1'-3" 16'-6"



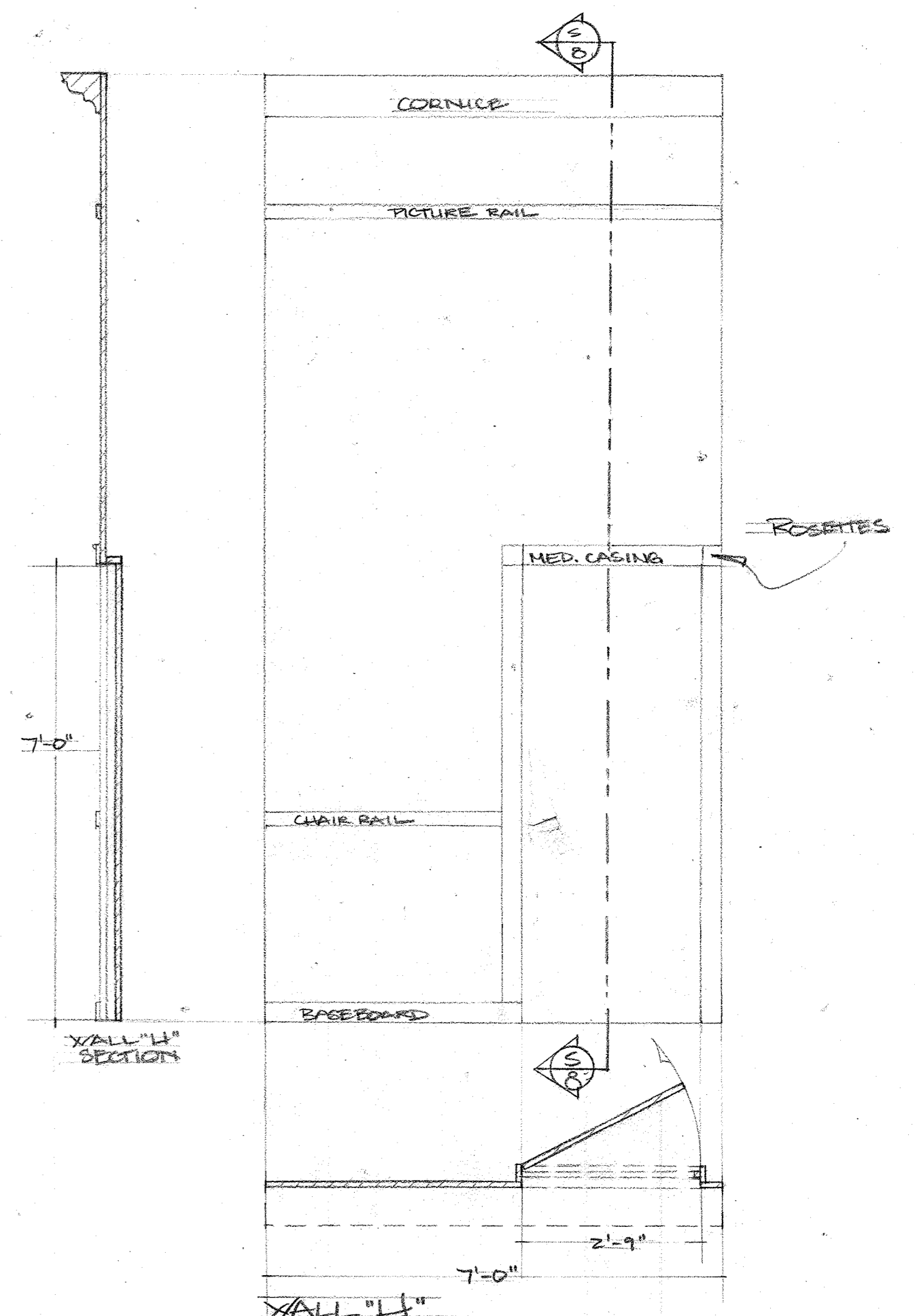
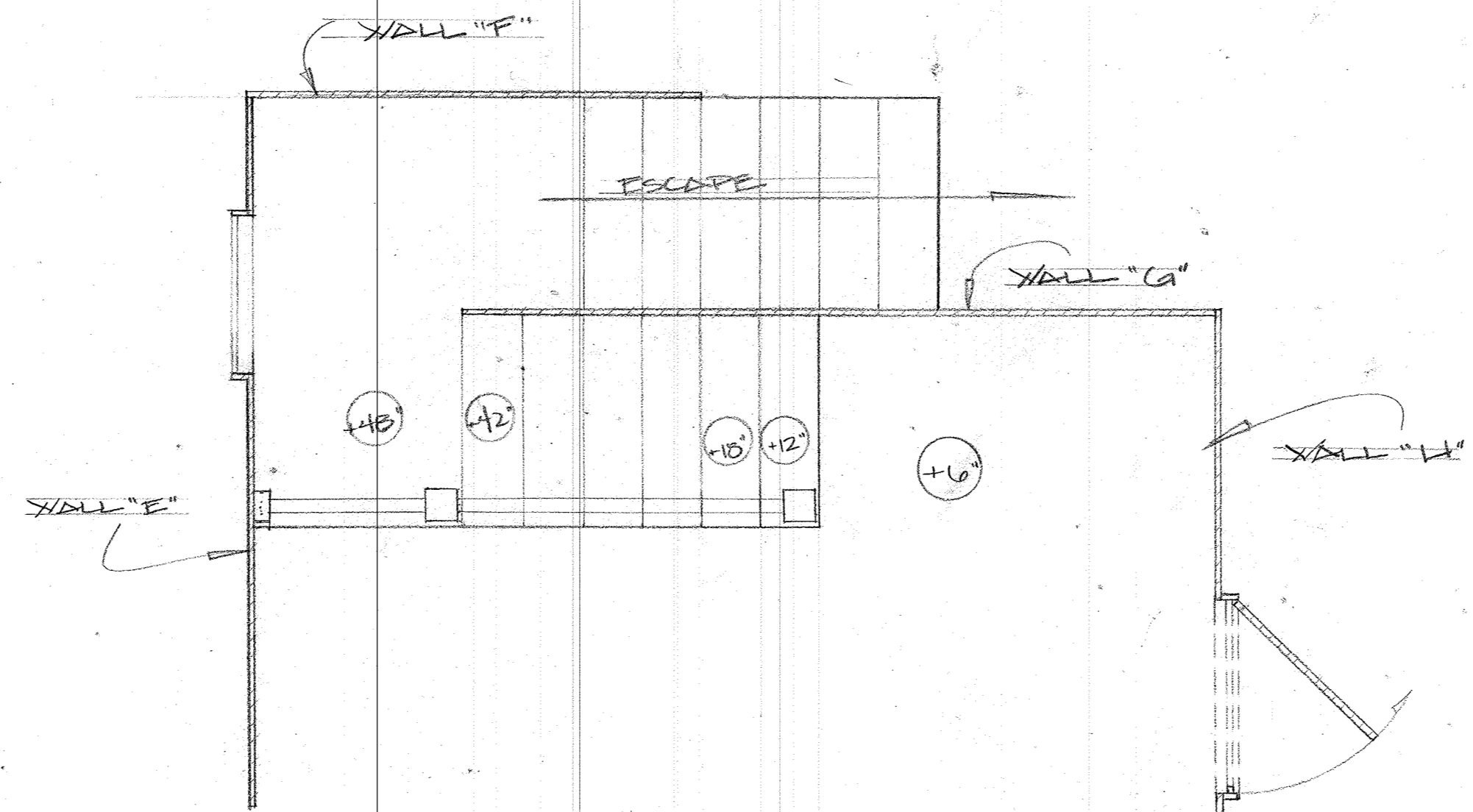
"YOU CAN'T TAKE IT WITH YOU"	
SCALE: 1/2" = 1'-0"	GROUND PLAN
DATE: 9/16/13	
1 OF 8	PAM LEE



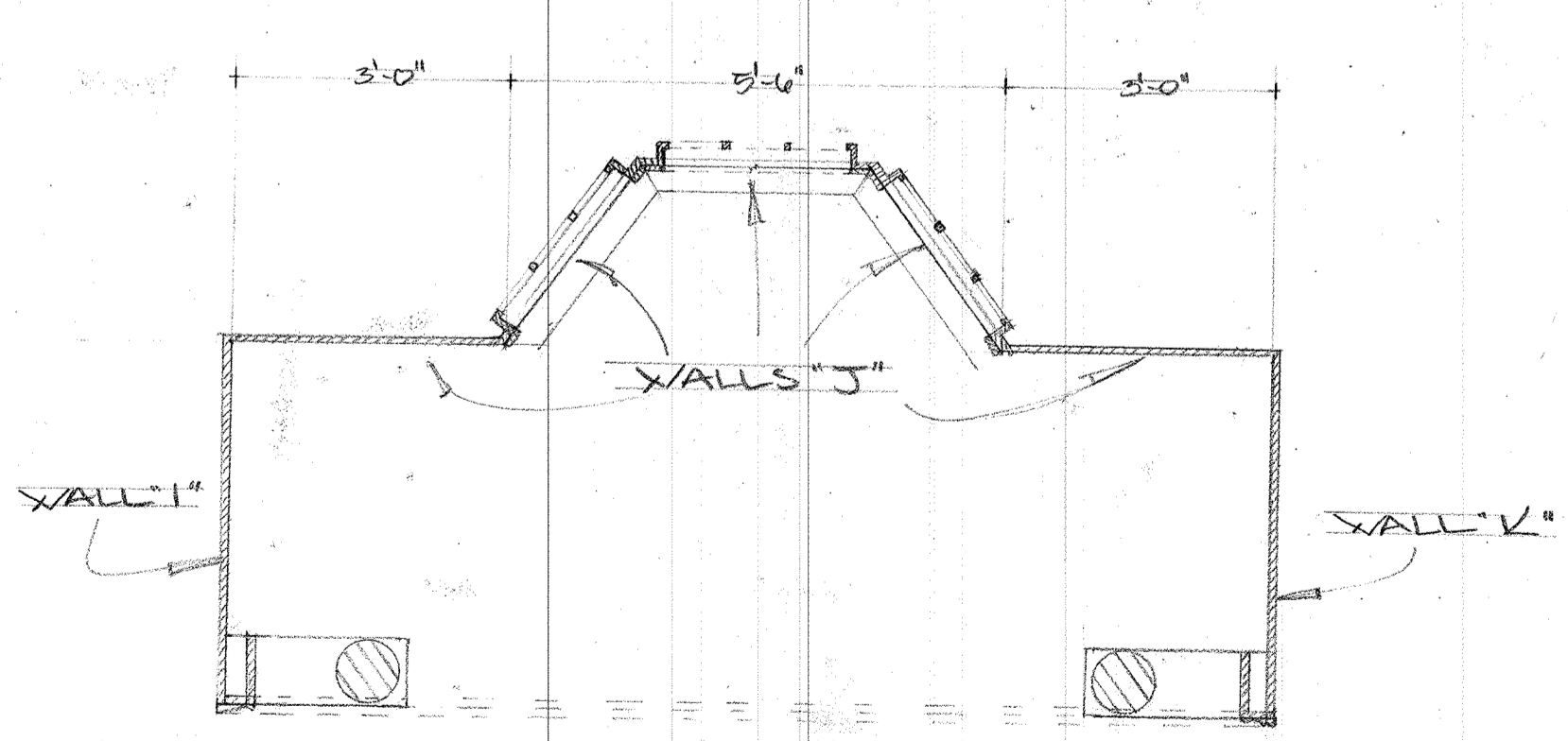
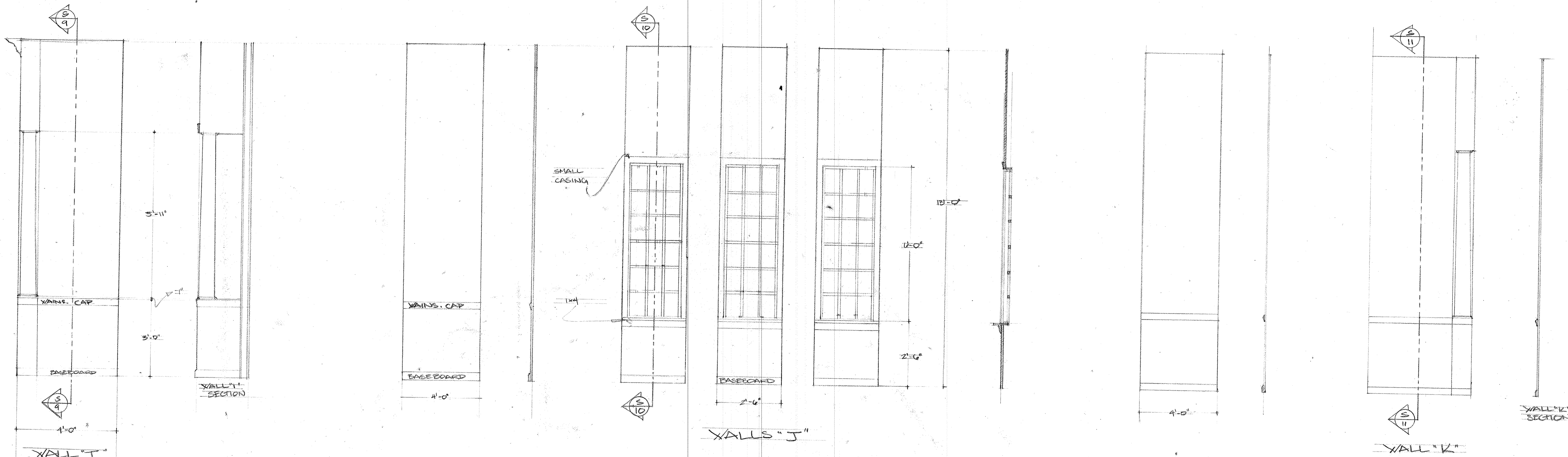
YOU CAN'T TAKE IT WITH YOU	
SCALE: 1/2" = 1'-0"	ELEVATIONS WALLS A-D
DATE: 9/16/13	
3 OF 8	DES. PAM LEE



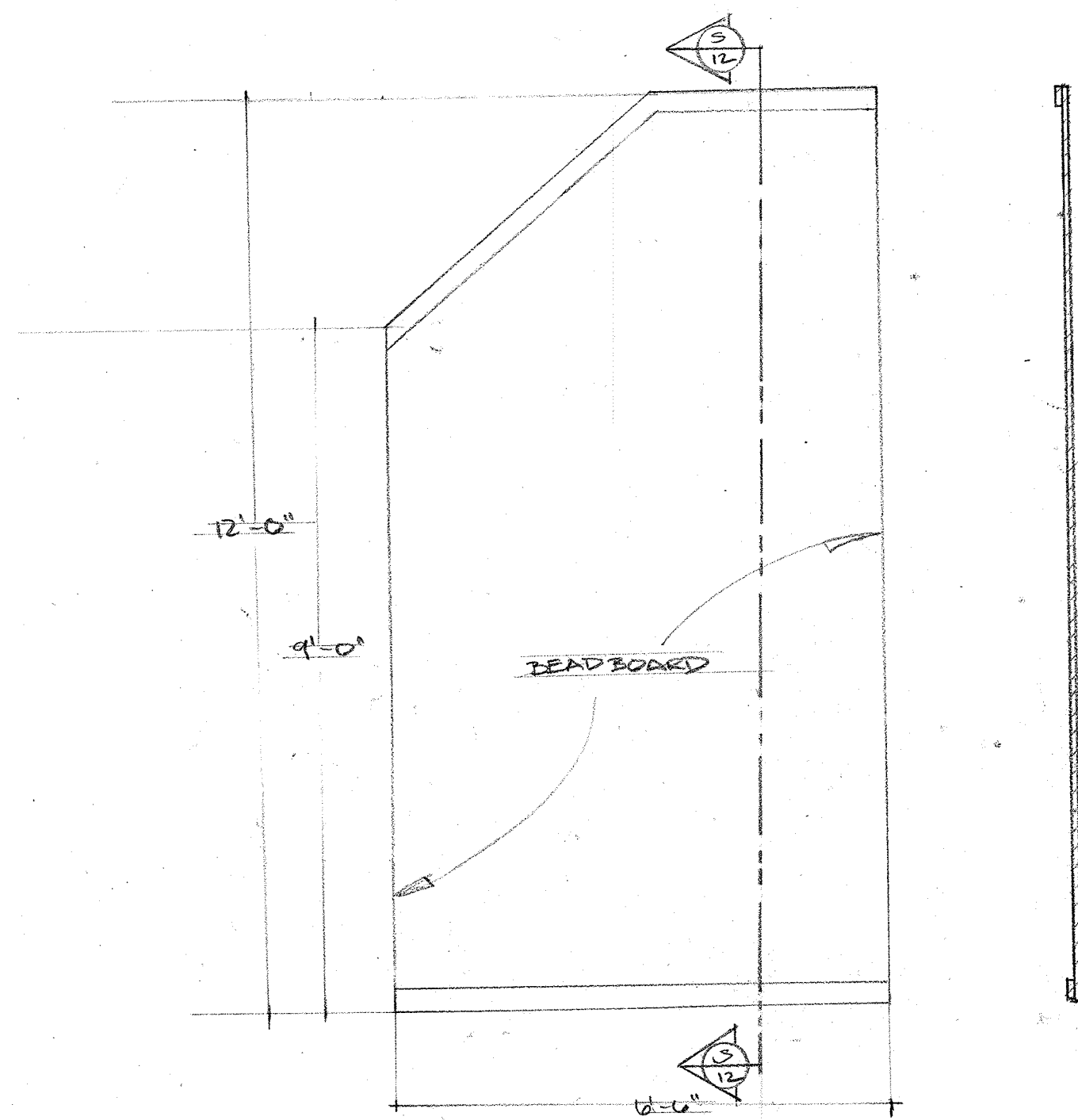
NOTE: WALLS 6" SHORTER TO ACCT. FOR STEP UP. ADJUST AS NECESSARY - JUST KEEP RELATIVE MOLDING HEIGHTS THE SAME, E.G.



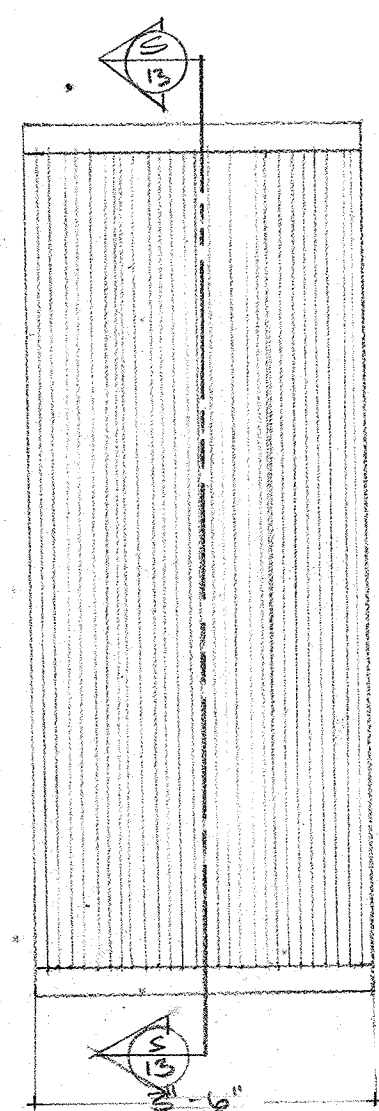
"YOU CAN'T TAKE IT WITH YOU"	
SCALE: 1/2" = 1'-0"	ELEVATIONS WALLS E-H
DATE: 9/14/13	
4 OF 8	PAM LEE



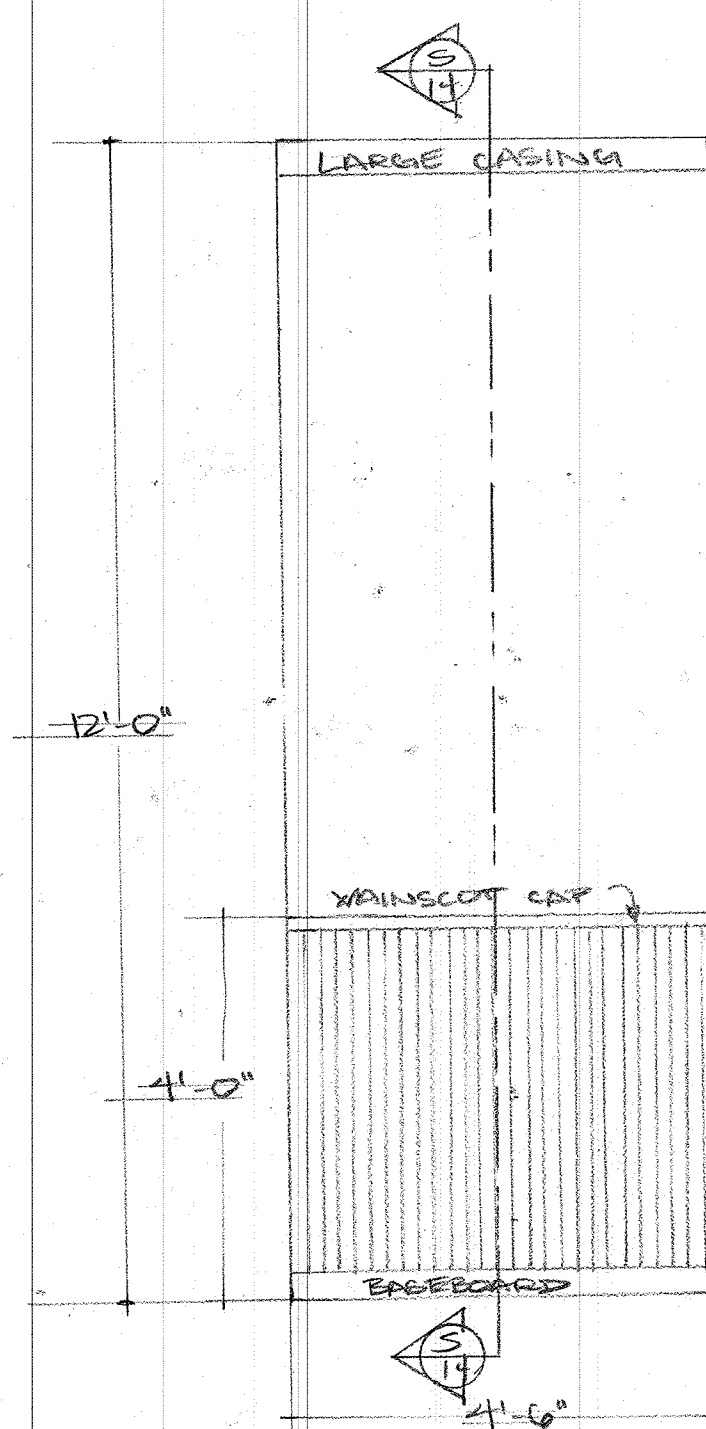
"YOU CAN'T TAKE IT WITH YOU"	
SCALE: 1/2" = 1'-0"	ELEVATIONS
DATE: 9/16/13	WALLS I-K
5 OF 8	JAM LEE



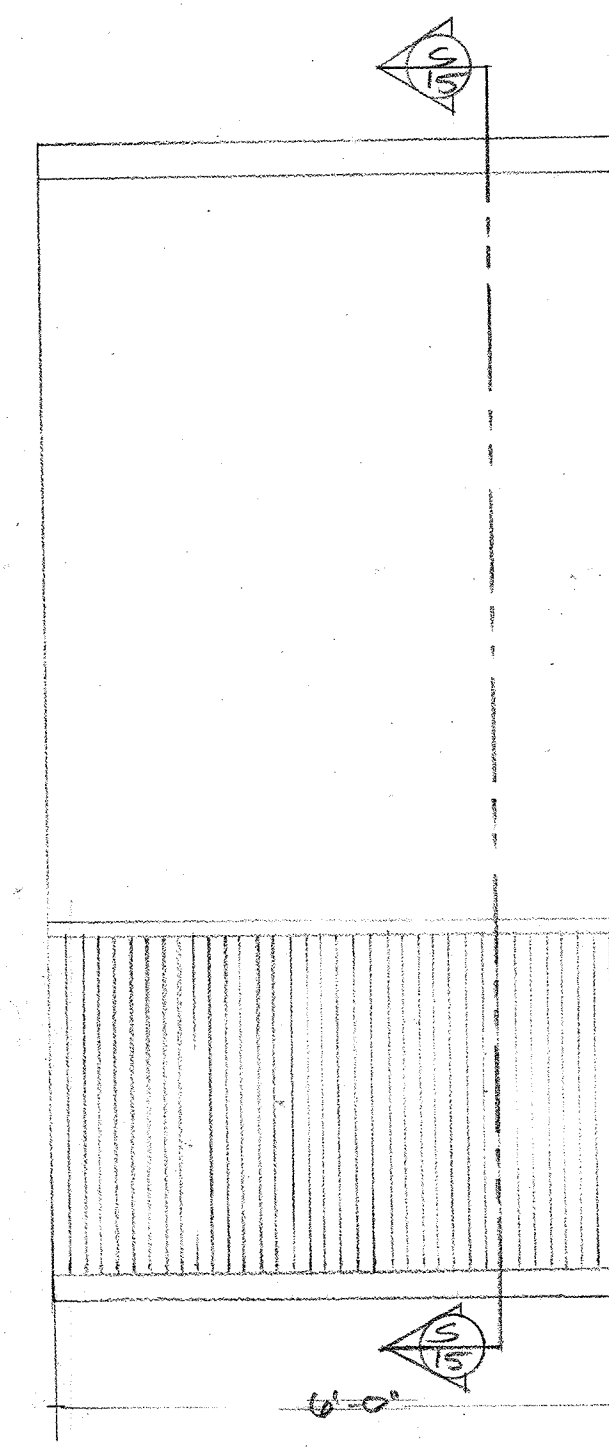
CELLAR
MASKING "A"



CELLAR
MASKING "B"

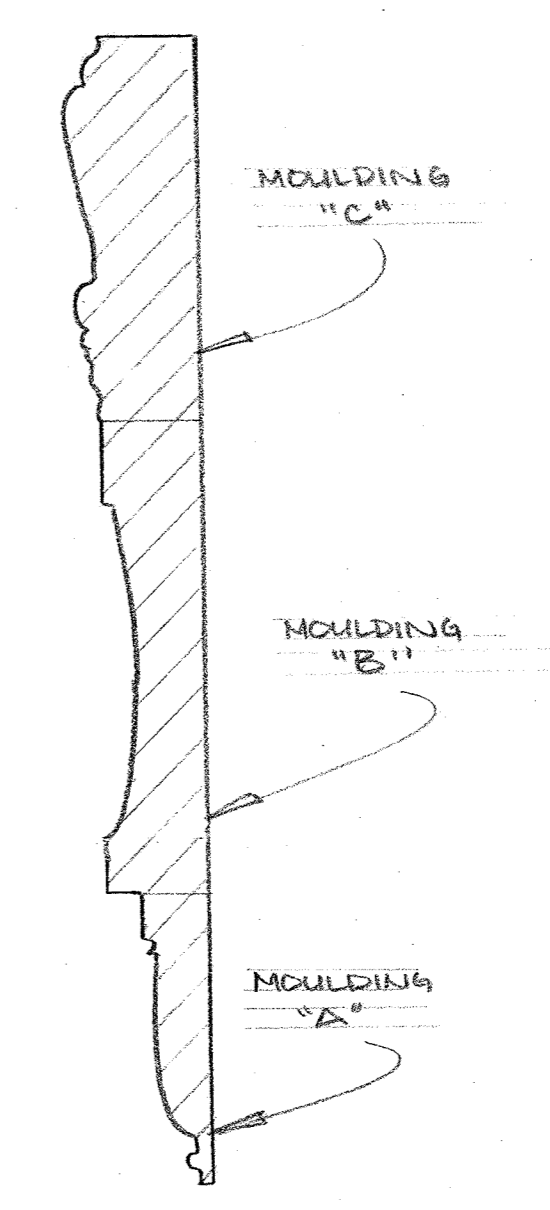
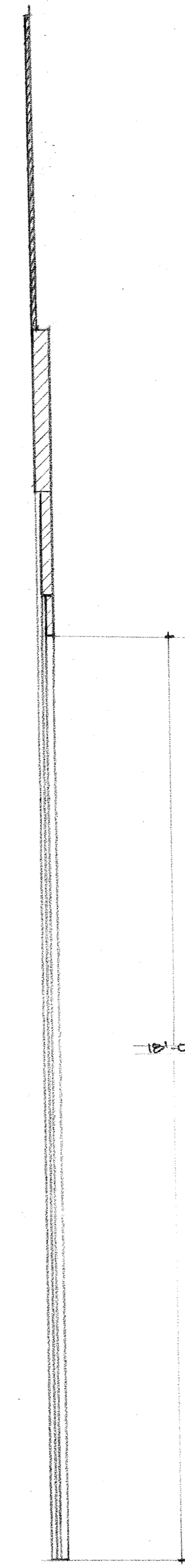
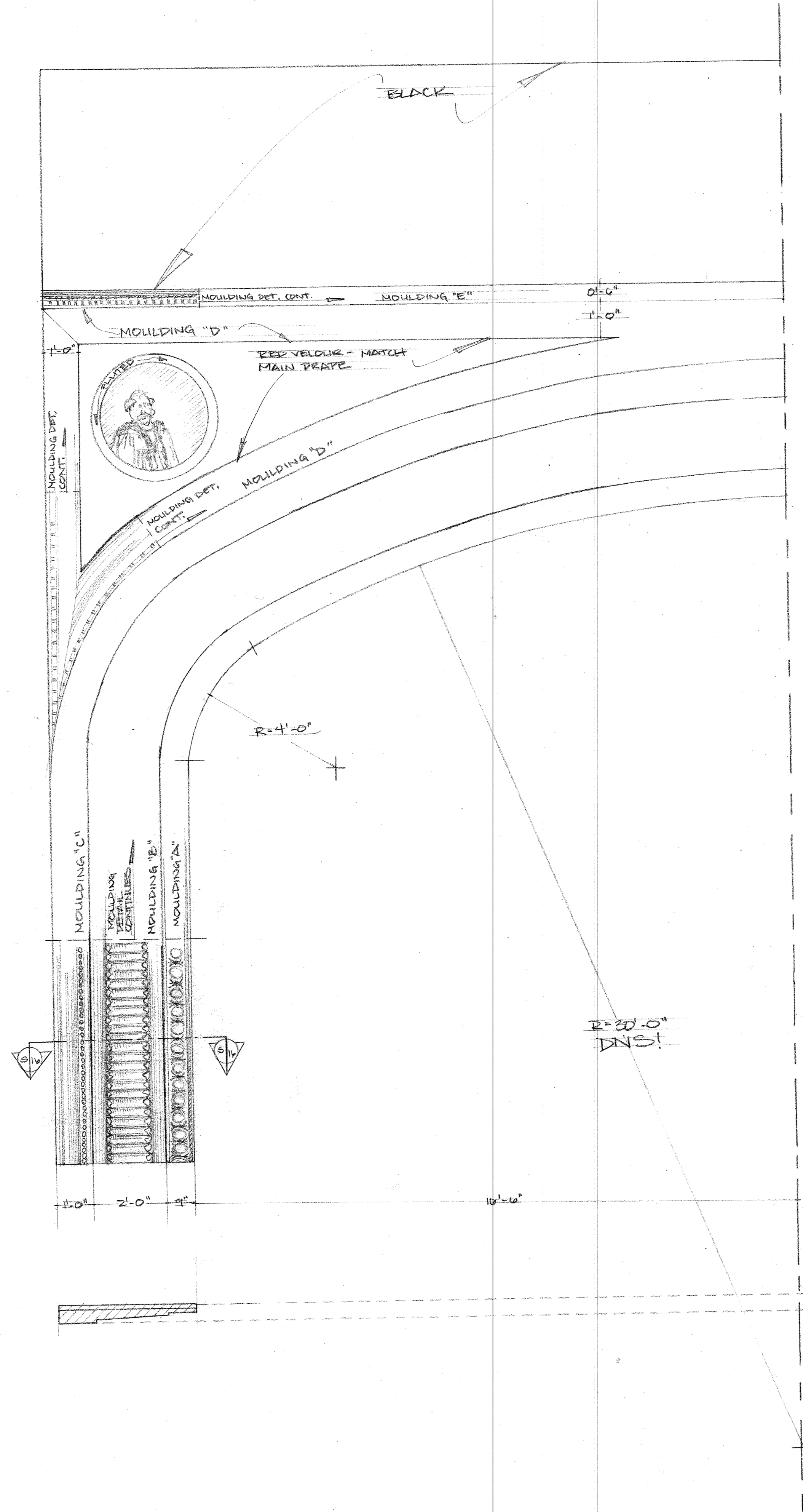
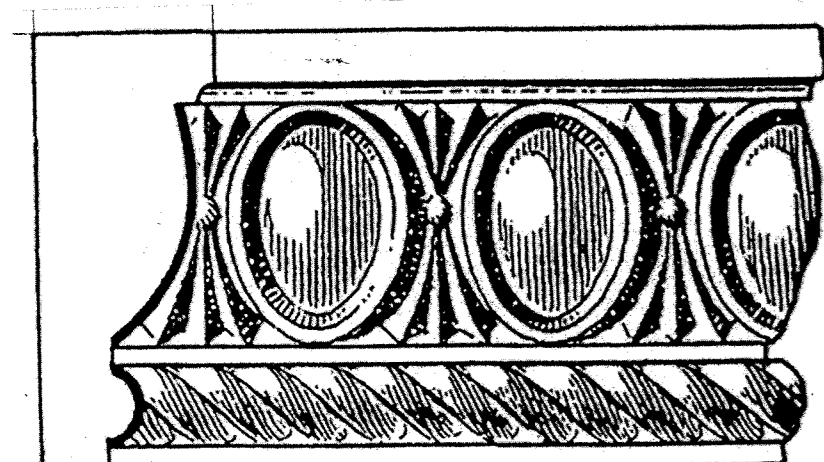
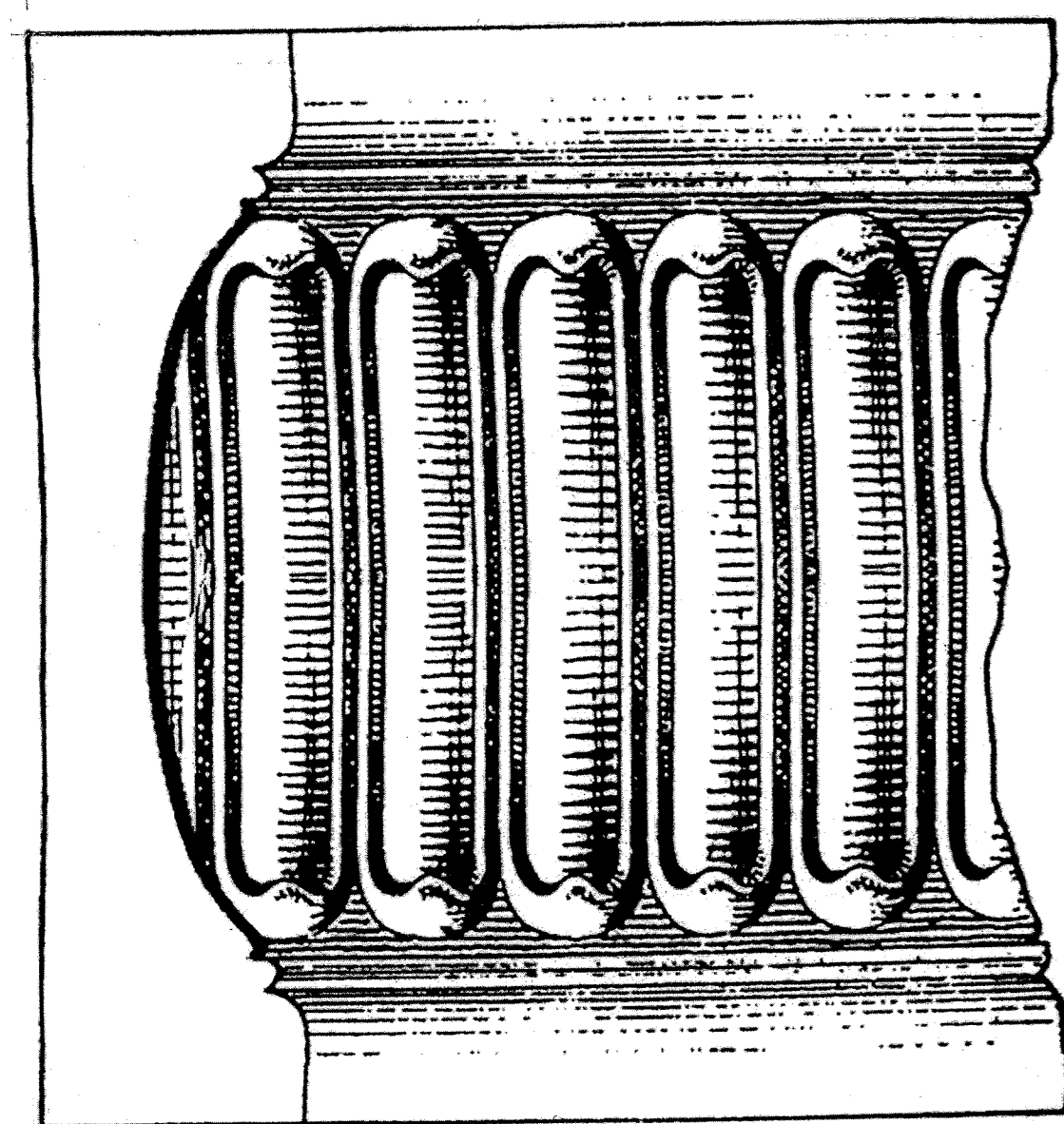
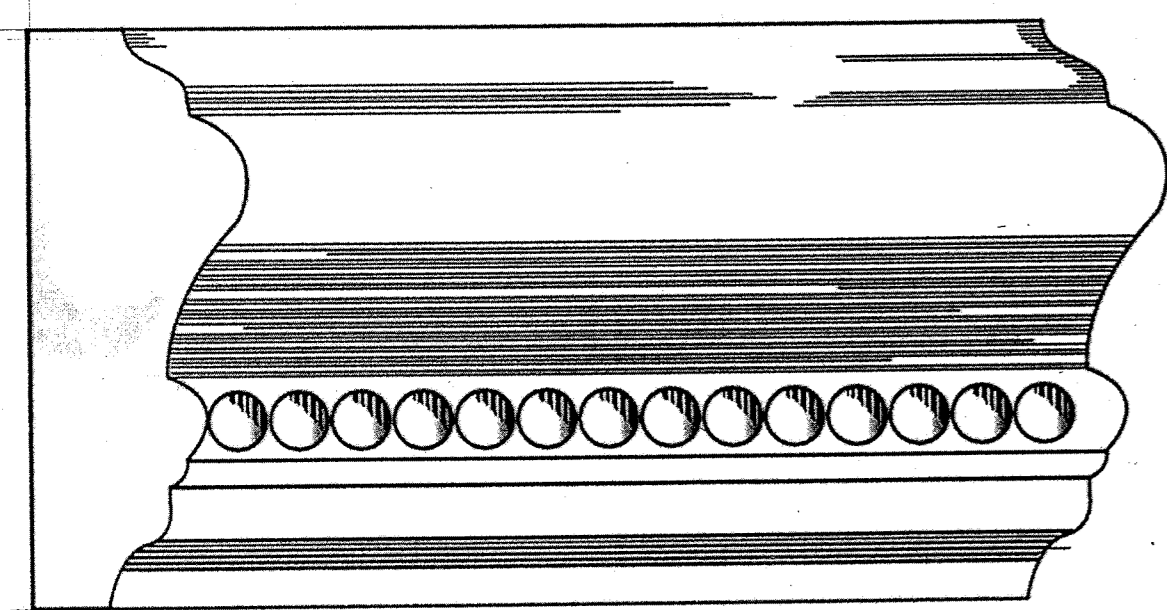
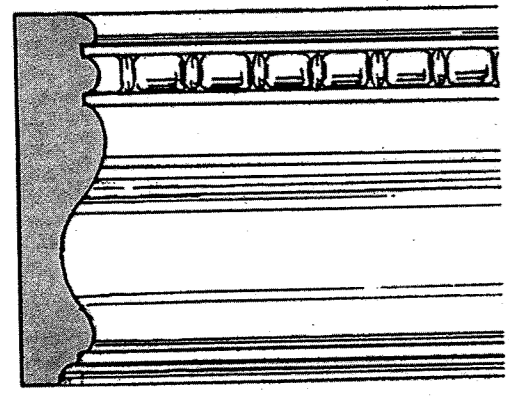
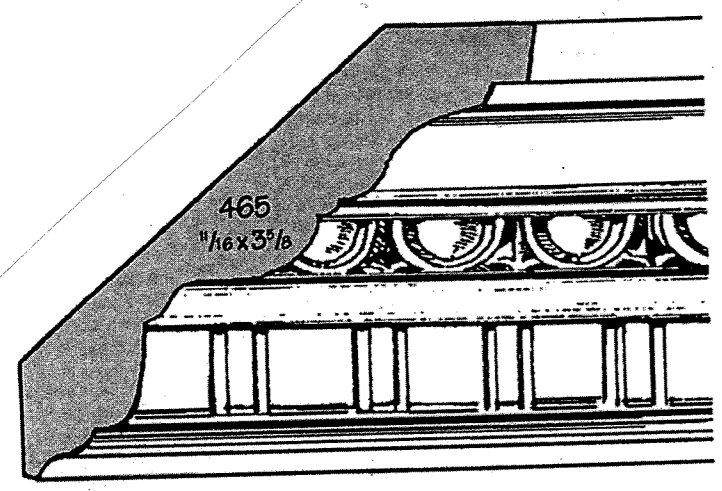


KITCHEN
MASKING "A"



KITCHEN
MASKING "B"

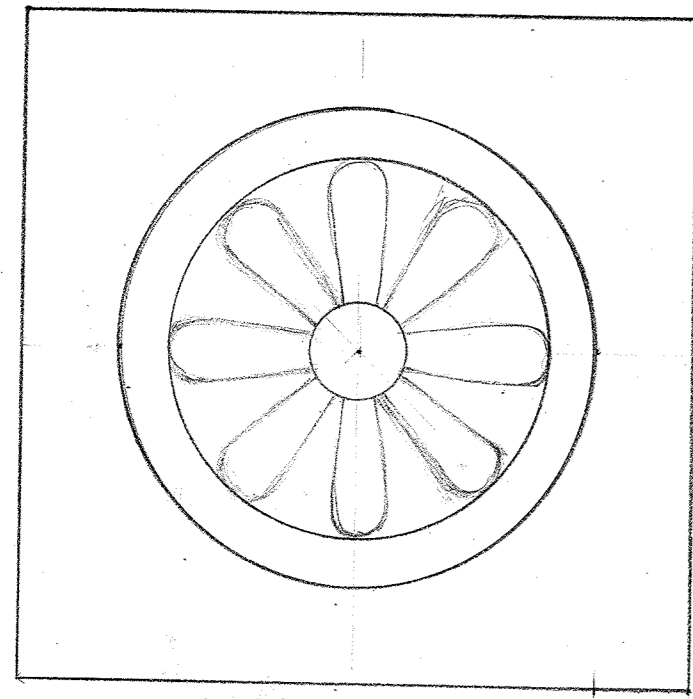
MOULDING PROFILES ARE
A GUIDE - ALL NEED TO
BE FLATTENED TO FIT BEAM DEPTH



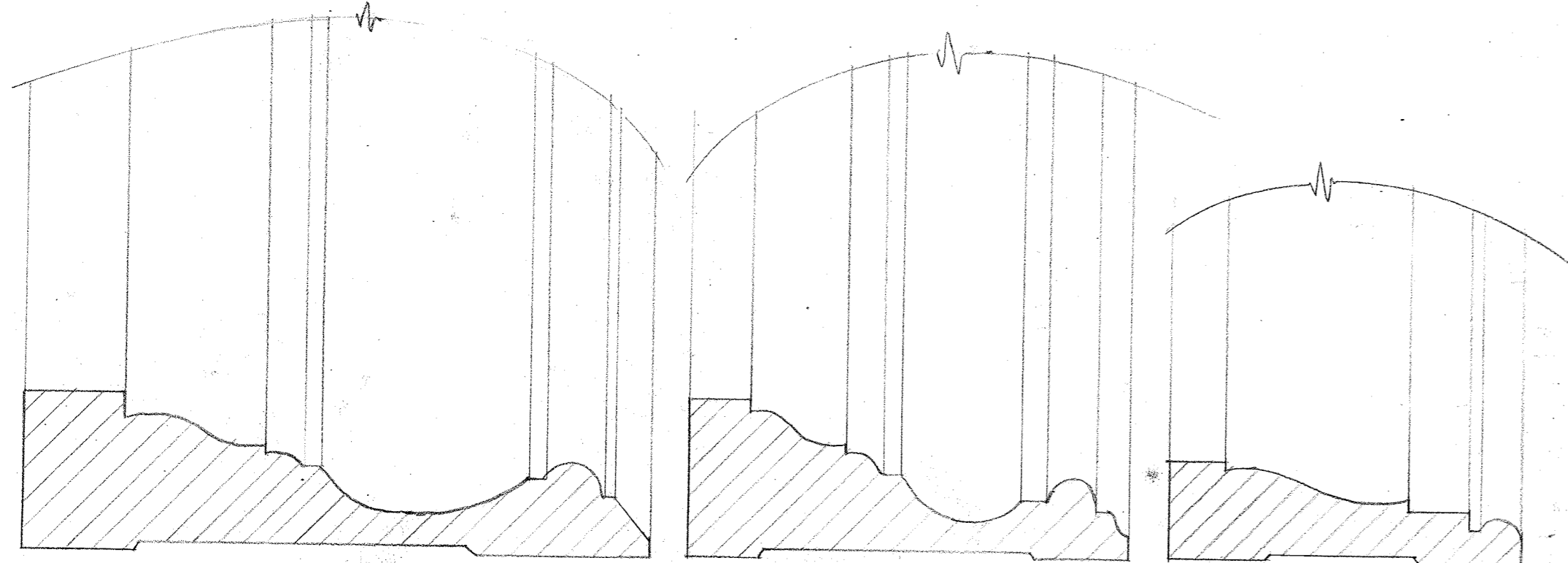
MAIN ARCH
SECTION
SCALE:
1 1/2\"/>

"YOU CAN'T TAKE IT WITH YOU"

SCALE: 1/2" = 1'-0"	PARTIAL ELEVATION
DATE: 9/16/18	1/3 MOULDING DETAIL
7 of 8	PAT LEE



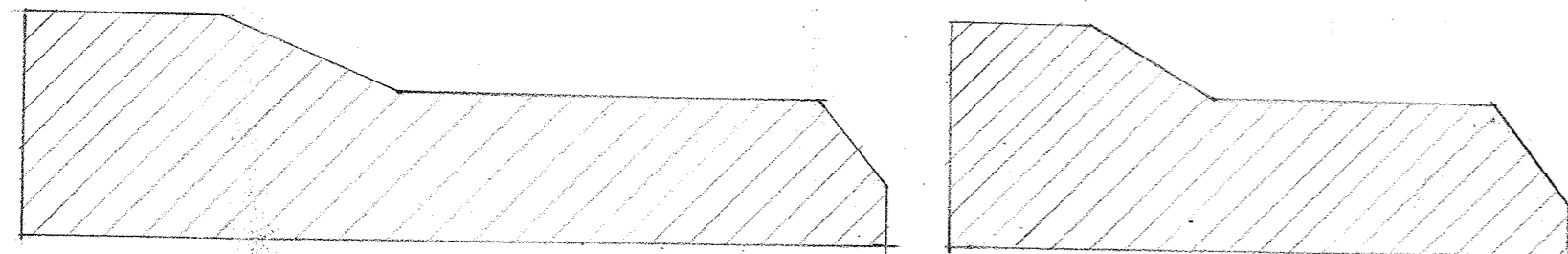
ROSETTE
DYKES # 730



LARGE CASING
DYKES #210

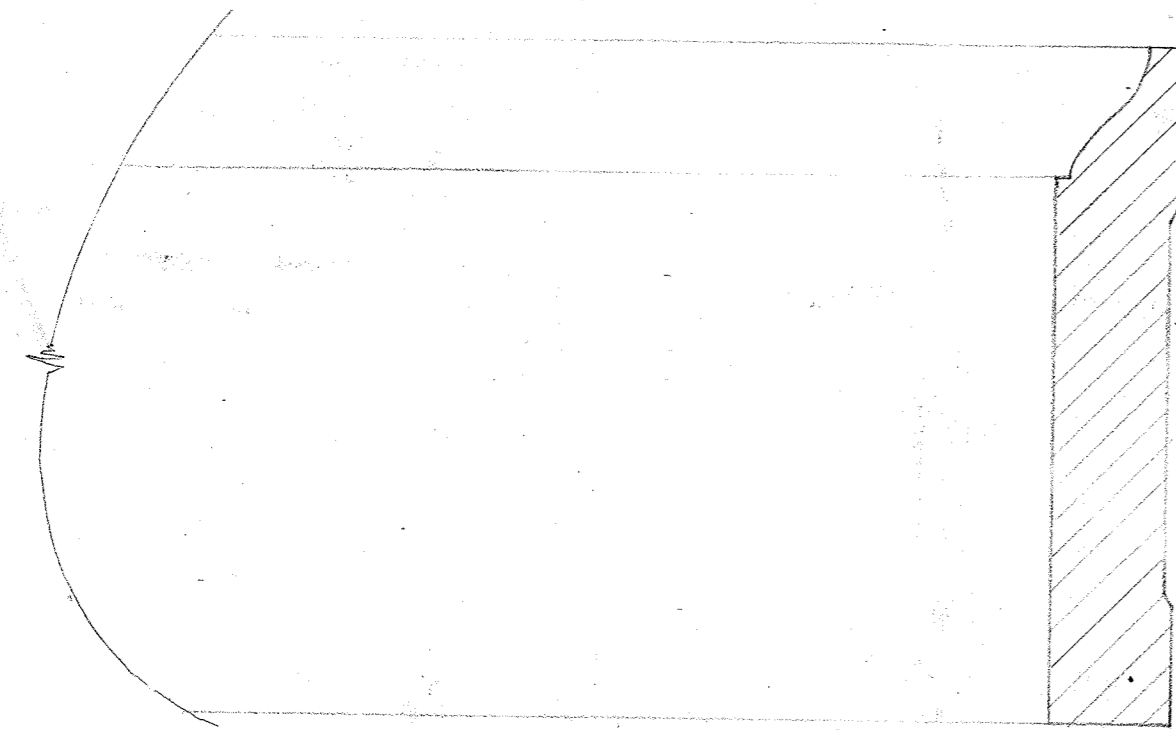
MEDIUM CASING
DYKES #211

SMALL CASING
DYKES #212



PLINTH BLOCK LG.
DYKES #781

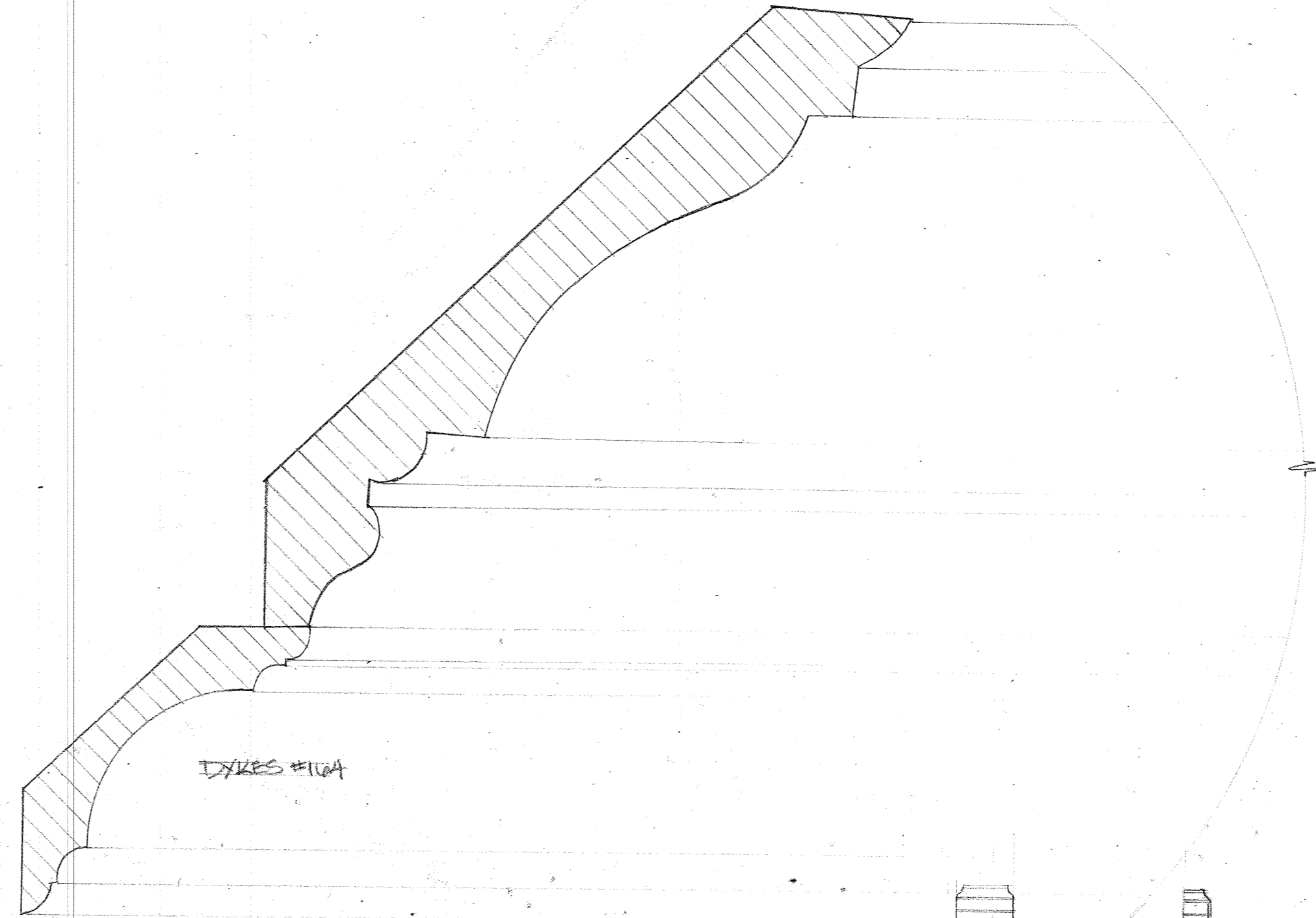
PLINTH BLOCK SM.
DYKES #782



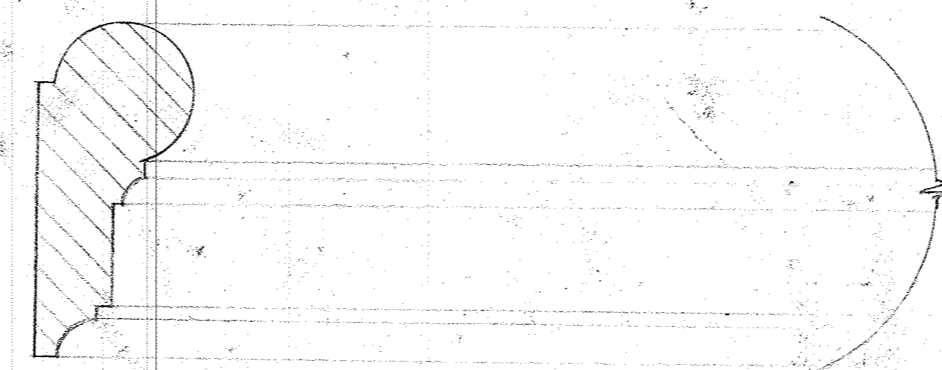
BASEBOARD
DYKES #A25



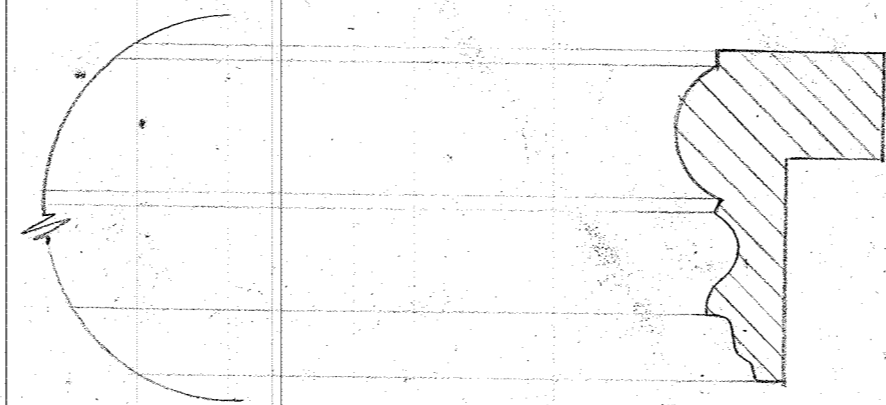
QUARTER ROUND
DYKES #73



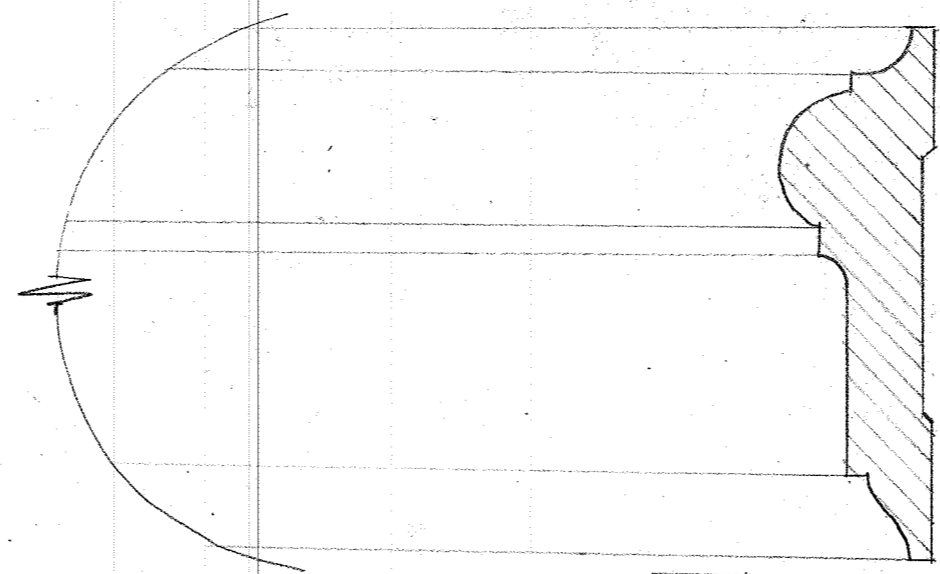
CORNICE
DYKES #104



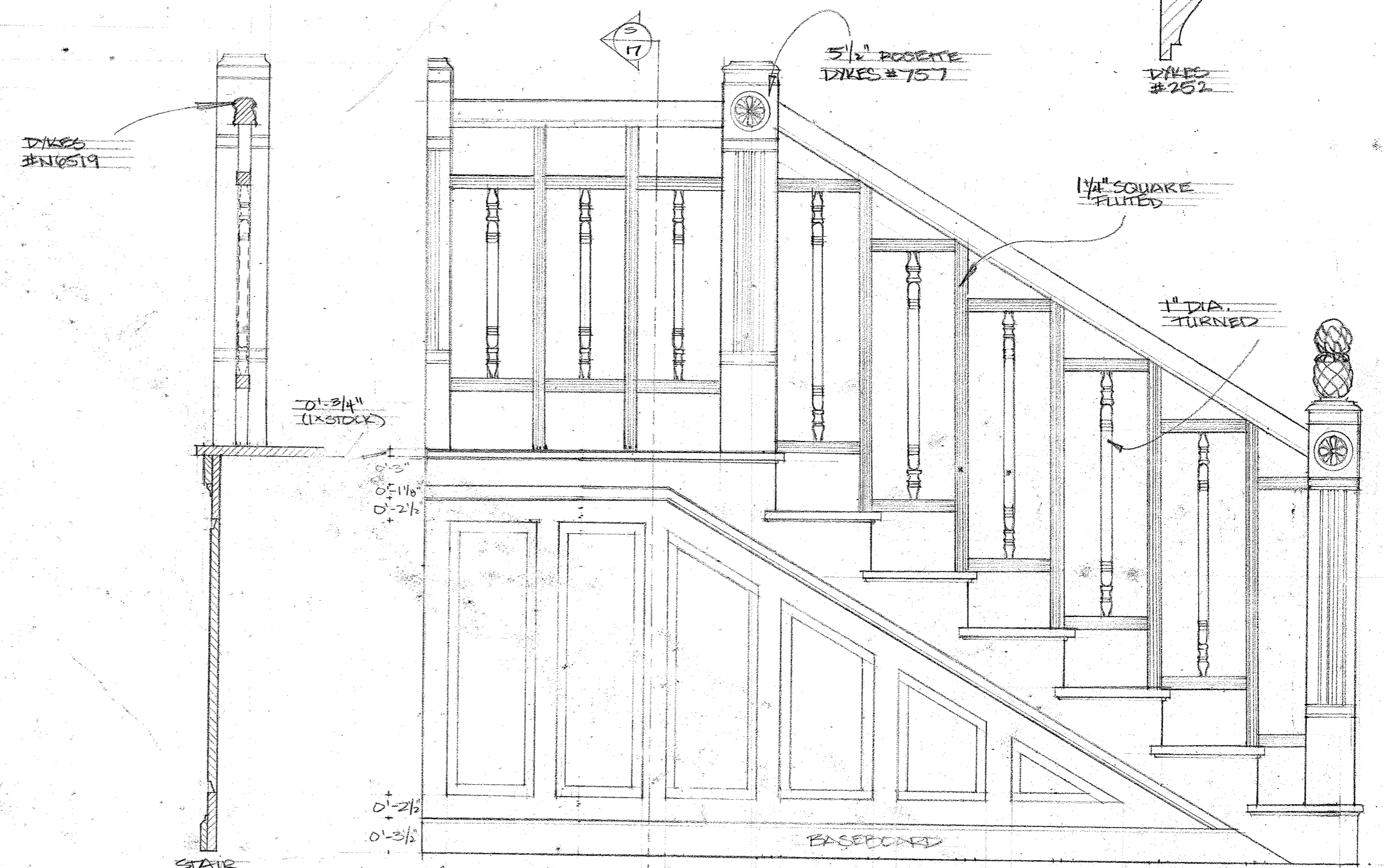
PICTURE RAIL
DYKES #202



WAINSOT CAP
DYKES #143

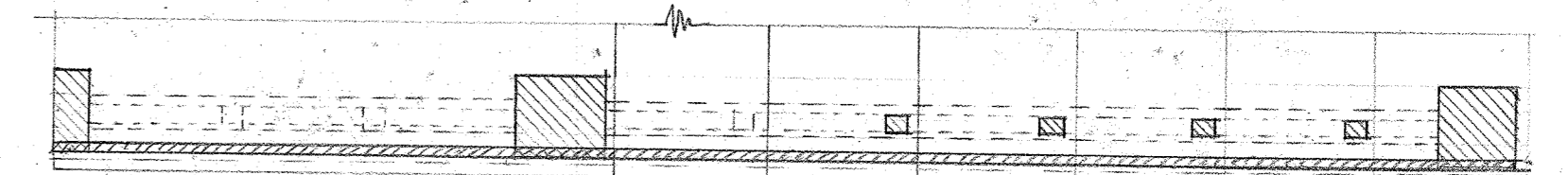


CHAIR RAIL
DYKES #284



STAIR SECTION

STAIR DETAIL
SCALE: 1" = 1'-0"



"YOU CAN'T TAKE IT WITH YOU"	
SCALE: FULL SIZE	MOLDING & STAIR DETAILS
DATE: 9/16/13	
8 of 8	PART LEE